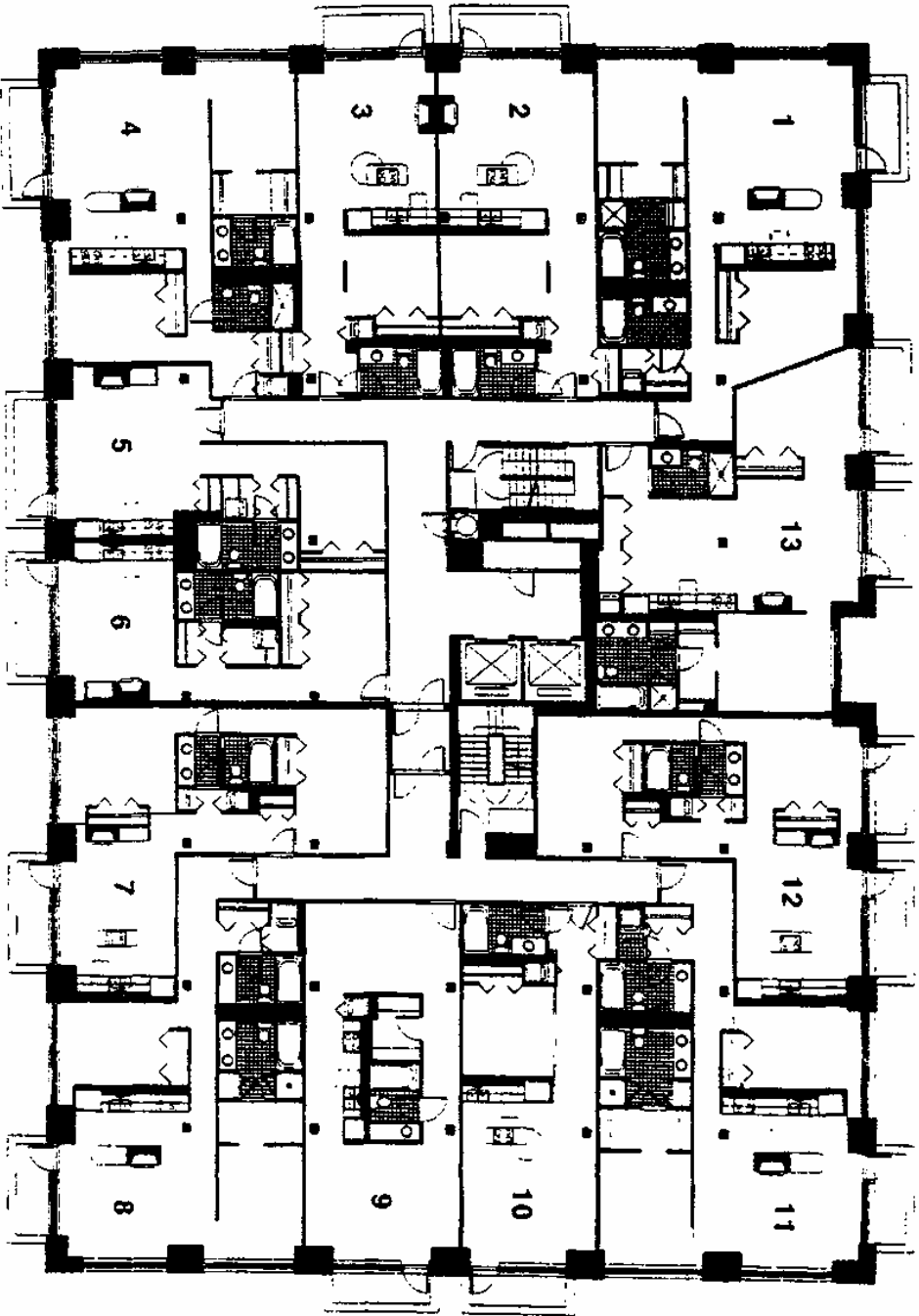


# CAPITOL HILL

LOFTS

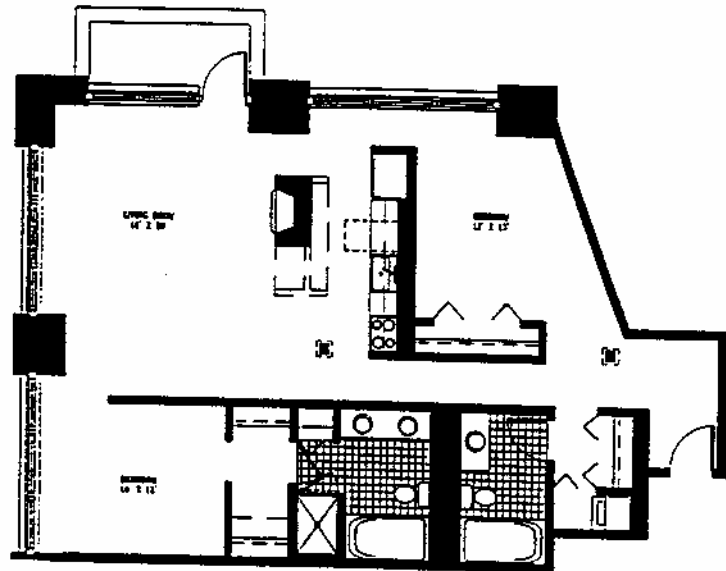


Chicago Urban Properties' continual attention to design and construction requires that all specifications, designs and materials are subject to change without notice.

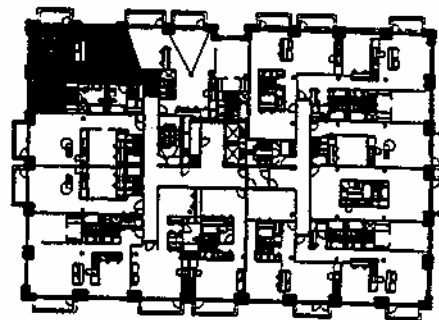
625 West Jackson • Chicago, Illinois 60661



These are preliminary plans and are  
subject to change without notice.



UNIT 1  
1,382 SQ.FT



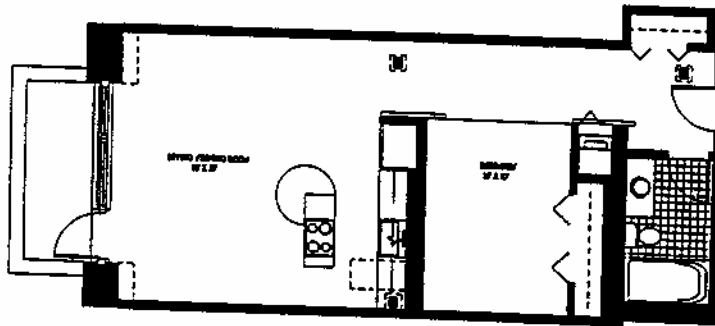
## CAPITOL HILL LOFTS

625 WEST JACKSON  
CHICAGO, ILLINOIS

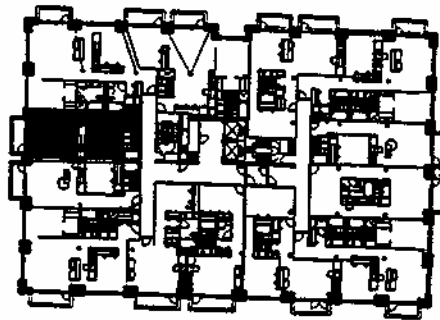
CHICAGO URBAN PROPERTIES  
DEVELOPER

BOOTH / HANSEN & ASSOCIATES  
ARCHITECT

These are preliminary plans and are subject to change without notice.



UNIT 2  
827 SQ.FT



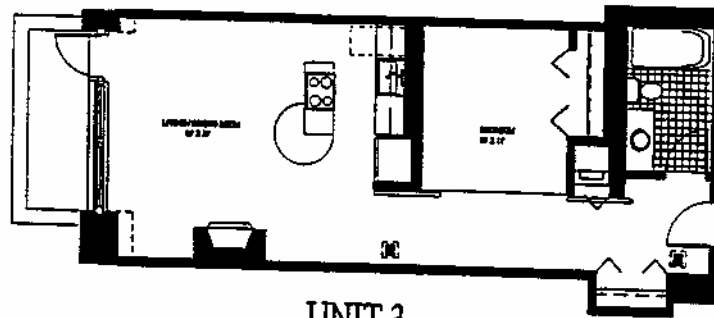
### CAPITOL HILL LOFTS

625 WEST JACKSON  
CHICAGO, ILLINOIS

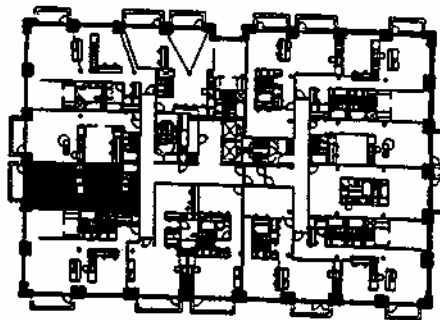
CHICAGO URBAN PROPERTIES  
DEVELOPER

BOOTH / HANSEN & ASSOCIATES  
ARCHITECT

These are preliminary plans and are subject to change without notice.



UNIT 3  
745 SQ.FT



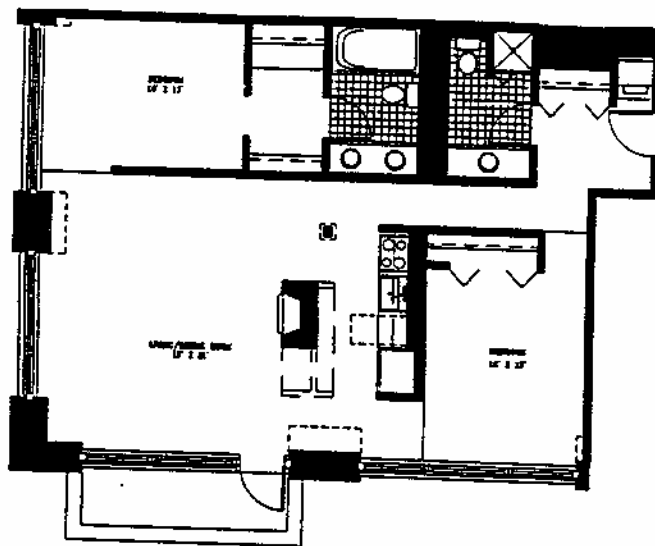
## CAPITOL HILL LOFTS

625 WEST JACKSON  
CHICAGO, ILLINOIS

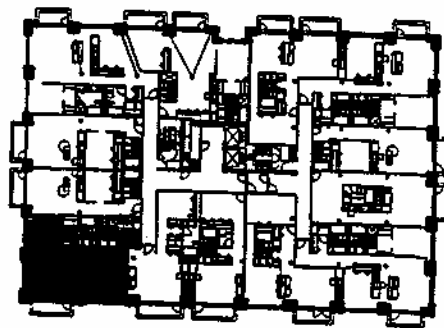
CHICAGO URBAN PROPERTIES  
DEVELOPER

BOOTH / HANSEN & ASSOCIATES  
ARCHITECT

These are preliminary plans and are  
subject to change without notice.



UNIT 4  
1,262 SQ.FT



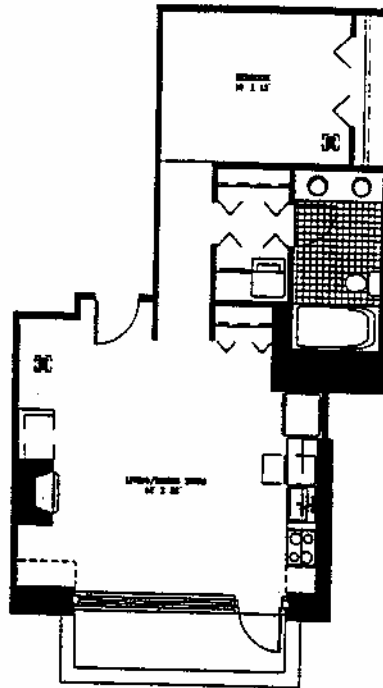
### CAPITOL HILL LOFTS

625 WEST JACKSON  
CHICAGO, ILLINOIS

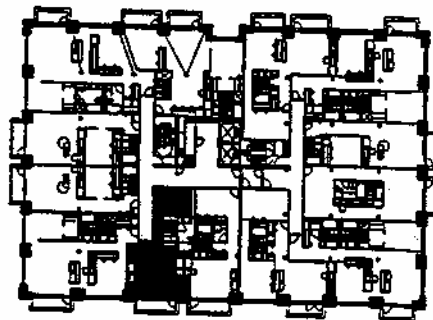
CHICAGO URBAN PROPERTIES  
DEVELOPER

BOOTH / HANSEN & ASSOCIATES  
ARCHITECT

These are preliminary plans and are  
subject to change without notice.



UNIT 5  
792 SQ.FT



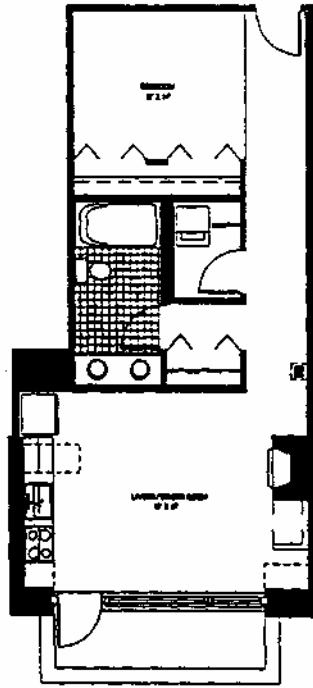
## CAPITOL HILL LOFTS

625 WEST JACKSON  
CHICAGO, ILLINOIS

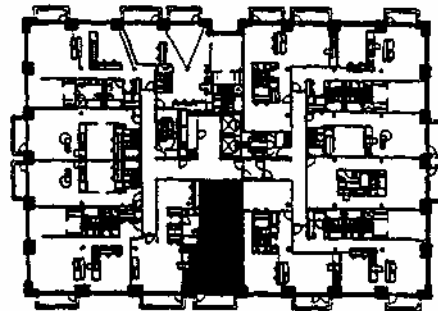
CHICAGO URBAN PROPERTIES  
DEVELOPER

BOOTH / HANSEN & ASSOCIATES  
ARCHITECT

These are preliminary plans and are  
subject to change without notice.



UNIT 6  
766 SQ.FT



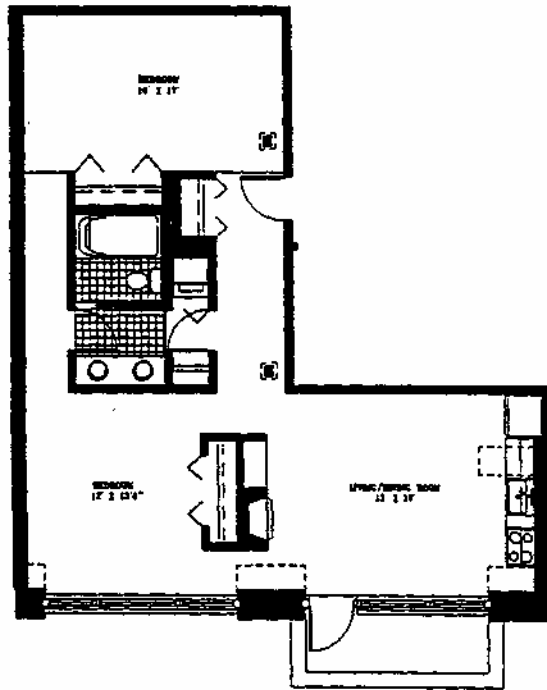
## CAPITOL HILL LOFTS

625 WEST JACKSON  
CHICAGO, ILLINOIS

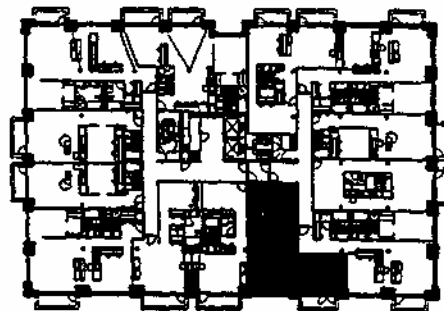
CHICAGO URBAN PROPERTIES  
DEVELOPER

BOOTH/HANSEN & ASSOCIATES  
ARCHITECT

These are preliminary plans and are  
subject to change without notice.



UNIT 7  
1,034 SQ.FT



## CAPITOL HILL LOFTS

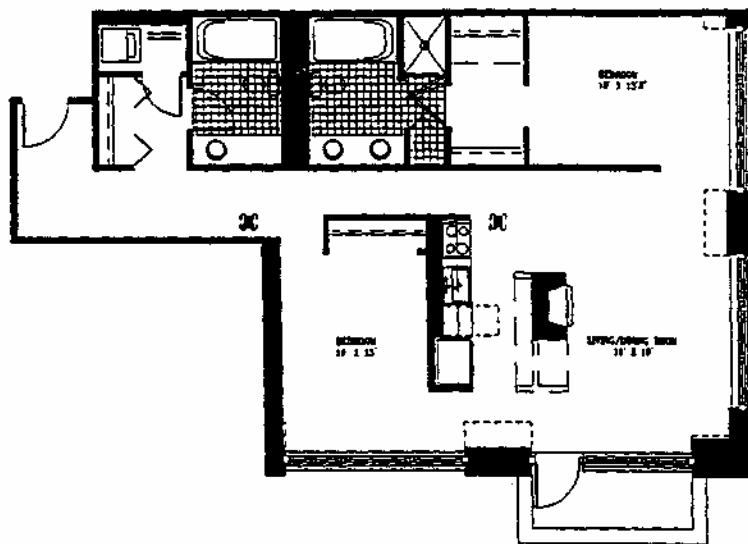
625 WEST JACKSON  
CHICAGO, ILLINOIS

CHICAGO URBAN PROPERTIES  
DEVELOPER

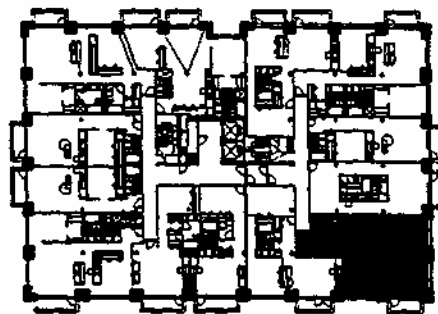
BOOTH / HANSEN & ASSOCIATES  
ARCHITECT



These are preliminary plans and are subject to change without notice.



UNIT 8  
1,286 SQ.FT



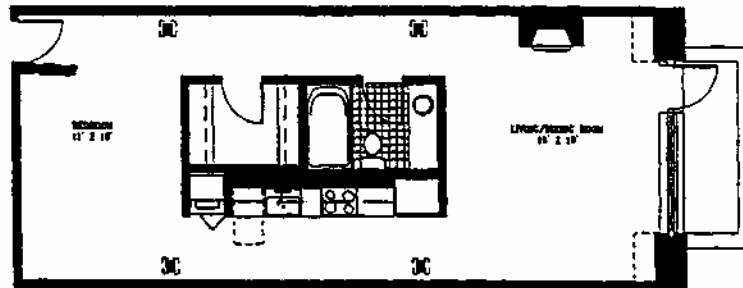
### CAPITOL HILL LOFTS

625 WEST JACKSON  
CHICAGO, ILLINOIS

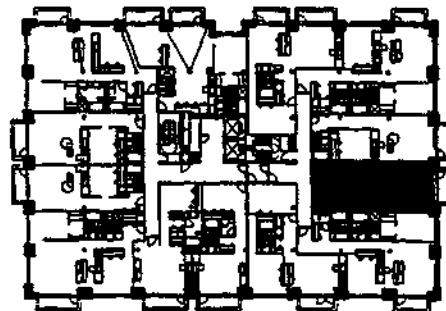
CHICAGO URBAN PROPERTIES  
DEVELOPER

BOOTH / HANSEN & ASSOCIATES  
ARCHITECT

These are preliminary plans and are subject to change without notice.



UNIT 9  
857 SQ.FT



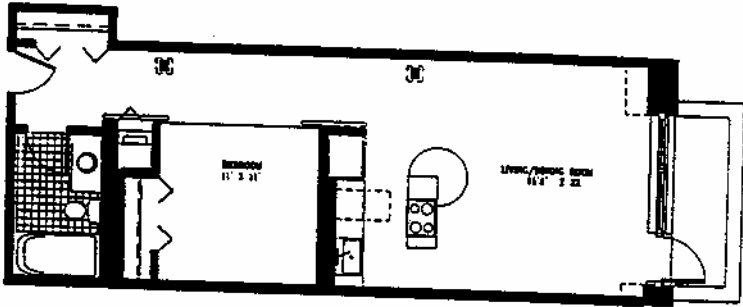
## CAPITOL HILL LOFTS

625 WEST JACKSON  
CHICAGO, ILLINOIS

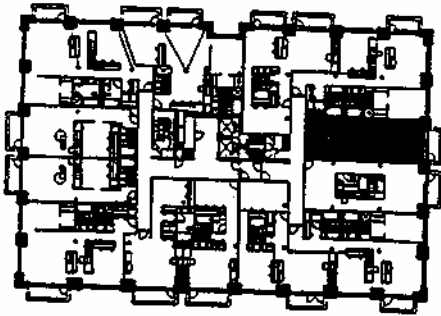
CHICAGO URBAN PROPERTIES  
DEVELOPER

BOOTH / HANSEN & ASSOCIATES  
ARCHITECT

These are preliminary plans and are subject to change without notice.



UNIT 10  
755 SQ.FT



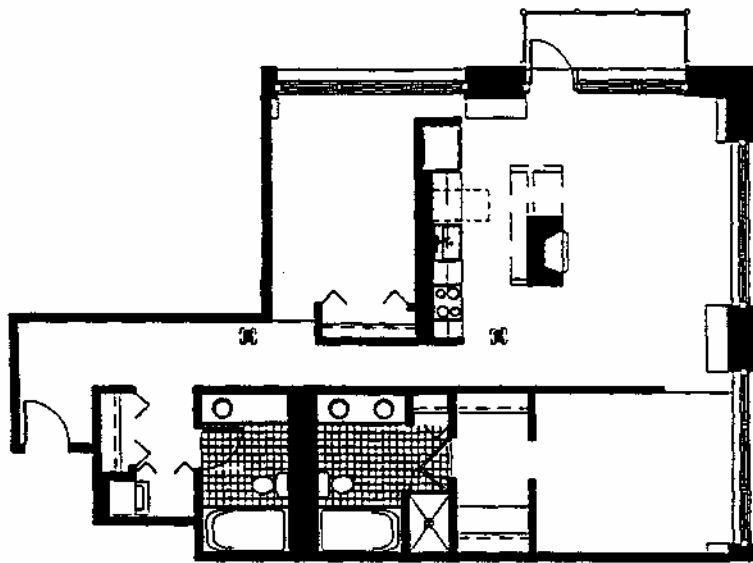
# CAPITOL HILL LOFTS

625 WEST JACKSON  
CHICAGO, ILLINOIS

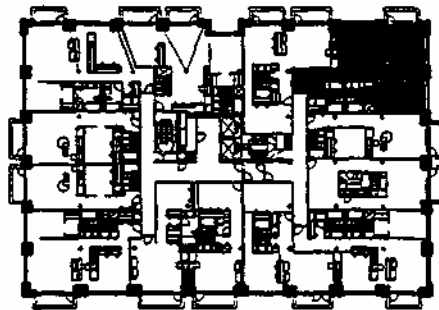
CHICAGO URBAN PROPERTIES  
DEVELOPER

BOOTH / HANSEN & ASSOCIATES  
ARCHITECT

These are preliminary plans and are  
subject to change without notice



UNIT 11  
1,348 SQ.FT.



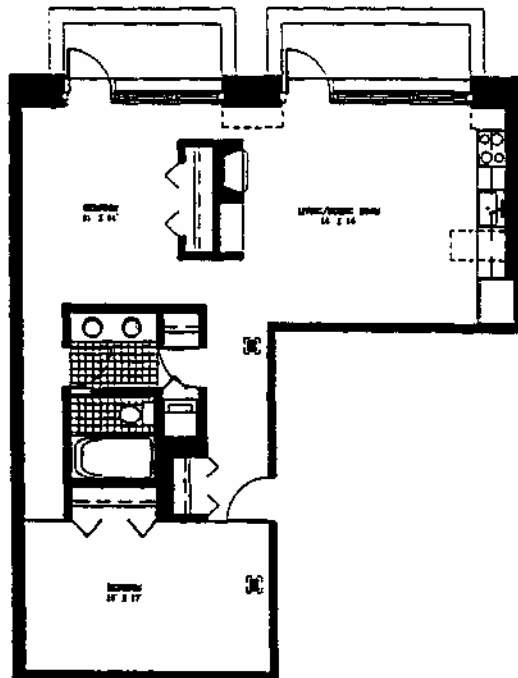
## CAPITOL HILL LOFTS

625 WEST JACKSON  
CHICAGO, ILLINOIS

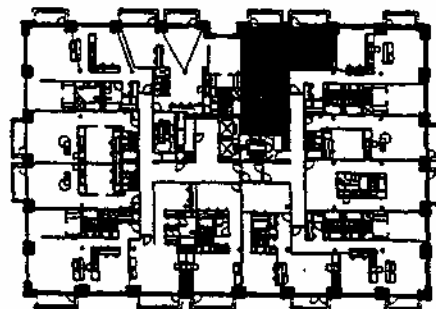
CHICAGO URBAN PROPERTIES  
DEVELOPER

BOOTH / HANSEN & ASSOC.  
ARCHITECT

These are preliminary plans and are subject to change without notice.



UNIT 12  
1,015 SQ.FT



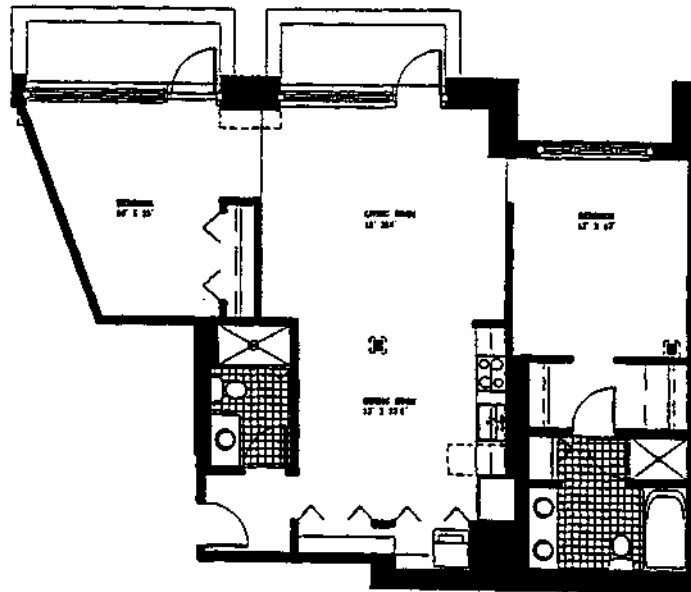
## CAPITOL HILL LOFTS

625 WEST JACKSON  
CHICAGO, ILLINOIS

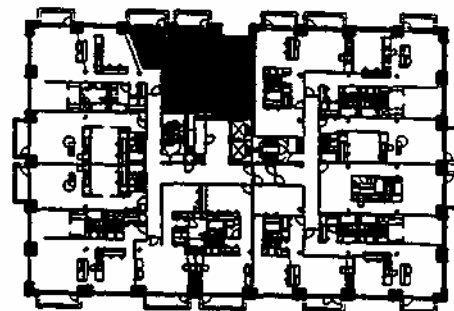
CHICAGO URBAN PROPERTIES  
DEVELOPER

BOOTH / HANSEN & ASSOCIATES  
ARCHITECT

These are preliminary plans and are  
subject to change without notice.



UNIT 13  
1,219 SQ.FT



## CAPITOL HILL LOFTS

625 WEST JACKSON  
CHICAGO, ILLINOIS

CHICAGO URBAN PROPERTIES  
DEVELOPER

BOOTH / HANSEN & ASSOCIATES  
ARCHITECT